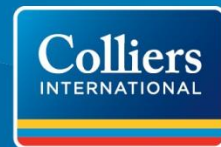


FOR LEASE > 438,150 SQUARE FEET (DIVISIBLE)

Crest Hill Industrial Park

16824 Enterprise Blvd., Crest Hill, IL



UNDER
CONSTRUCTION



About This Property

- > Available: 438,150 SF (Divisible)
- > Office: To Suit
- > Site Size: ±24.49 Acres
- > Construction: Precast
- > Ceiling Height: 32' clear
- > Floor Slab: 7" un-reinforced sealed concrete slab on grade
- > Loading Docks: 36 exterior docks (exp. to 76 docks)
- > Drive in Doors: 4
- > Power: 2,000 amps
- > HVAC: Roof mounted air rotation units
- > Roof: Single ply 45-mil ballasted over 3.5" insulation (R-20)
- > Sprinklers: ESFR
- > Bay Sizes: 50' x 50' with 60' speed bay
- > Year Built: 2016
- > Car Parking: 319 spaces
- > Trailer Parking: 163 spaces
- > Sale Price/Lease Rate: Subject to Offer
- > Comments: Excellent I-55/I-80 access
Ideal for Office/Distribution
1.75 miles to full interchange at I-55 and Route 30
Professionally owned and managed
Low Will County real estate taxes
Close proximity to BNSF-UP Intermodal



Contact Us

DAVID A. BERCU, SIOR
Principal
847 698 8207
David.Bercu@colliers.com

JAMES R. ESTUS, SIOR
Principal
847 698 8235
Jim.Estus@colliers.com



No warranty or representation is made to the accuracy of the foregoing information.
Terms of sale or lease and availability are subject to change or withdrawal without notice.

COLLIERS INTERNATIONAL
6250 N. River Road, Suite 11-100
Rosemont, IL 60018
www.colliers.com

CREST HILL, ILLINOIS

CLEAR HEIGHT	32'-0"
---------------------	--------

DIVISION STREET

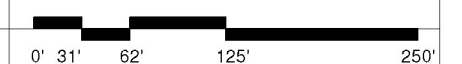
ELECT. ROOM -
SPRINKLER RM:



HARRIS ARCHITECTS, INC.
 WWW.HARRISARCHITECTS.COM 847.303.1155

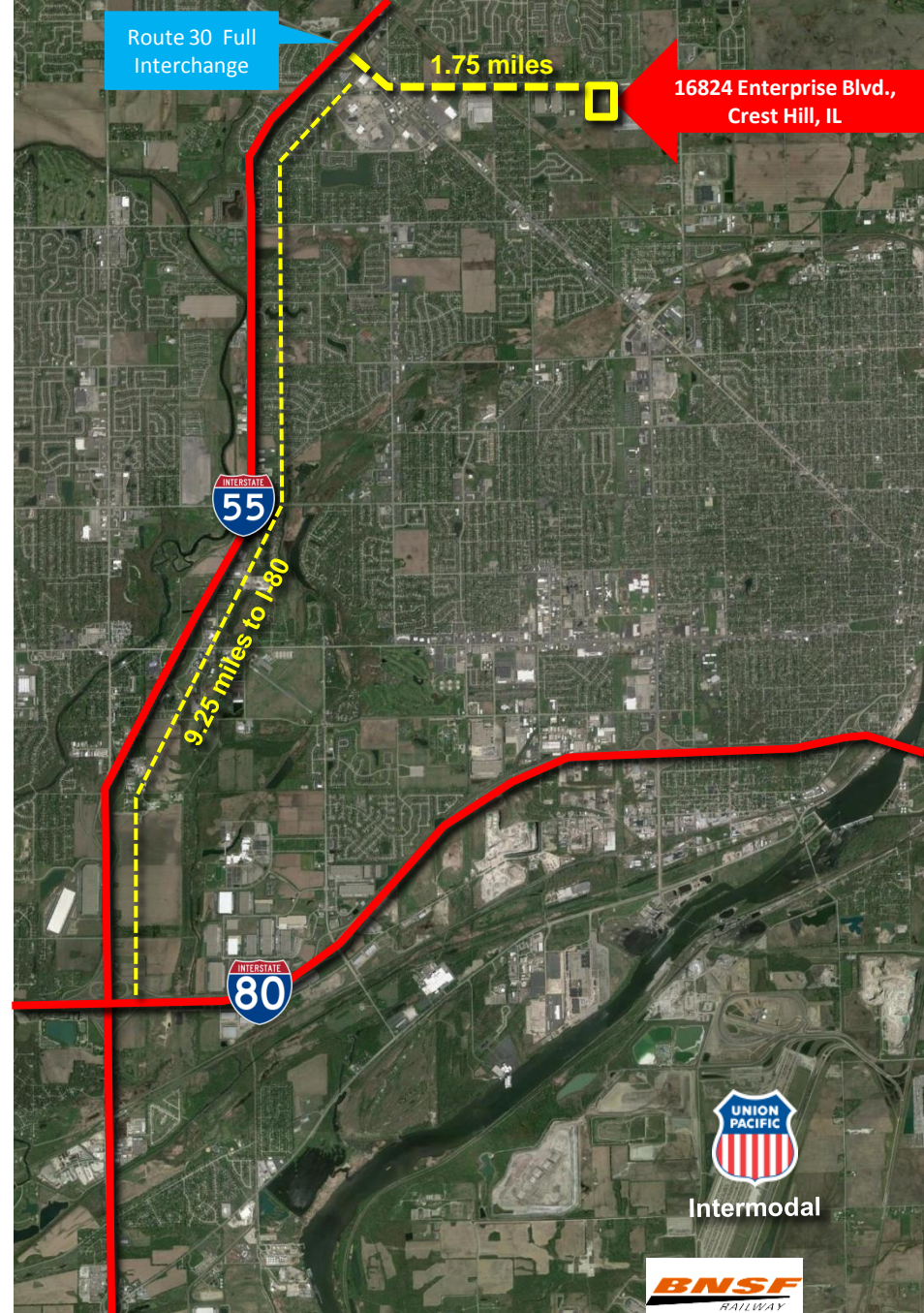
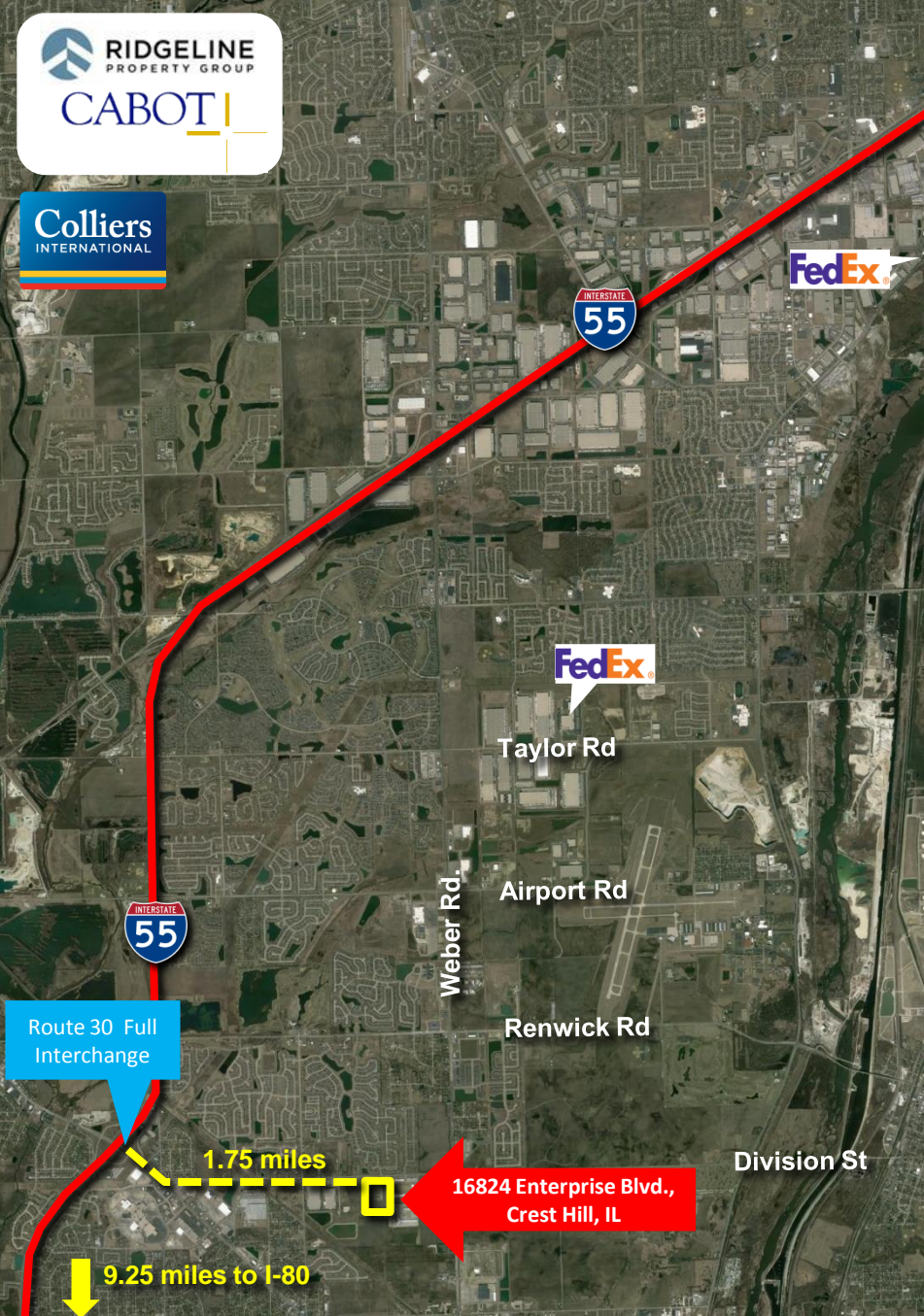
214487

10-20-2015





08-07-2015







DIVISION STREET

1.75 mi. to Site

