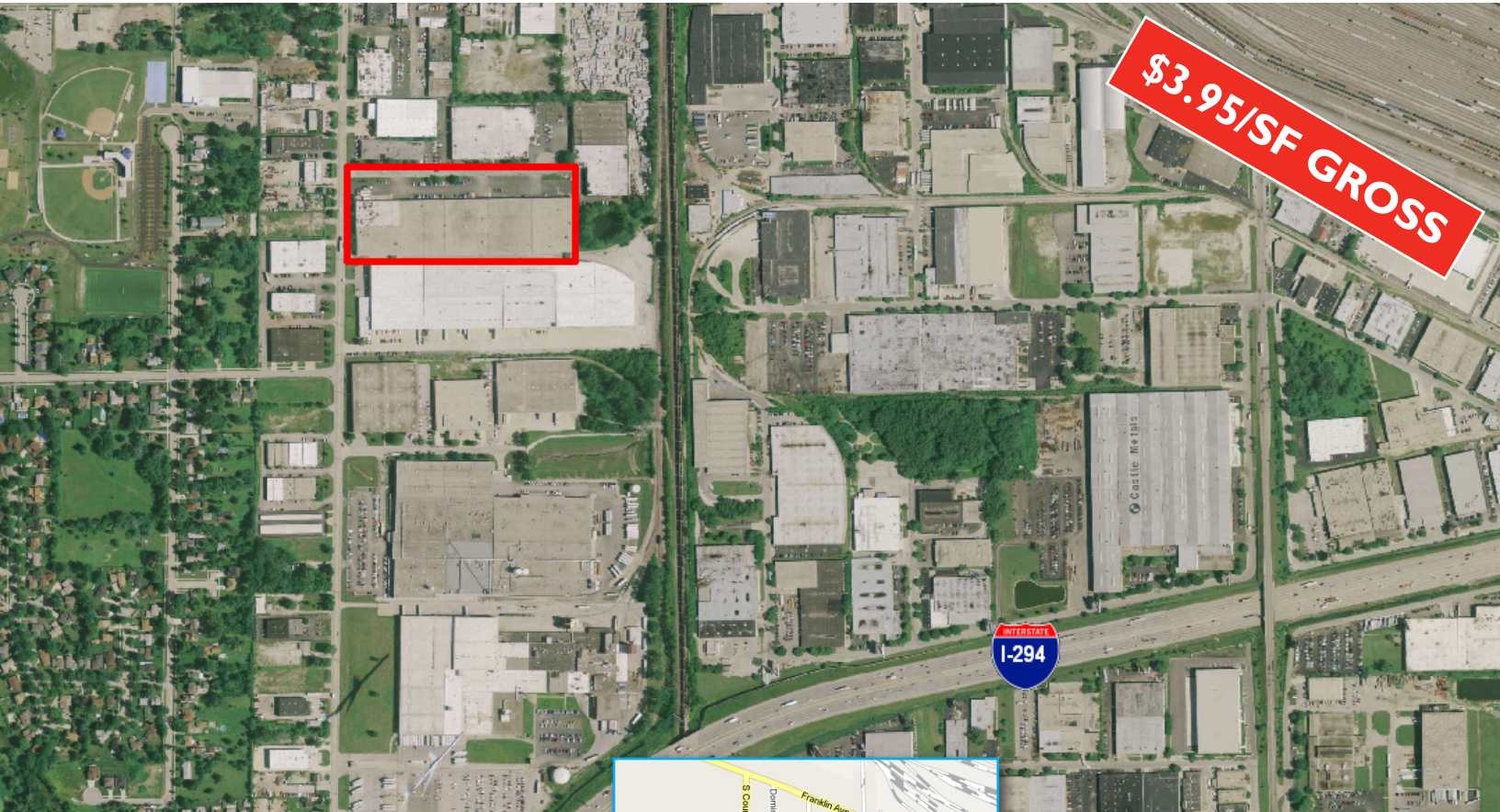


**FOR LEASE: 80,661 SF**  
1010-1050 Sesame Street - Bensenville, Illinois

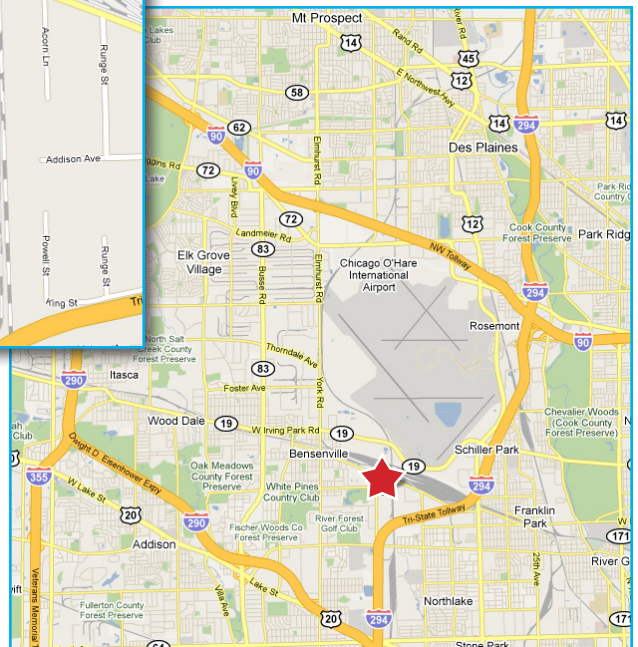
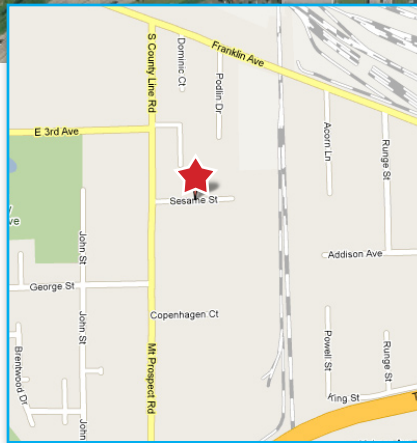


**\$3.95/SF GROSS**



**PROPERTY HIGHLIGHTS**

- ▶ Total Building Size: 252,000 SF
- ▶ Available Space: 80,661 SF
- ▶ Office Space: 3,000 SF (expandable)
- ▶ Land Size: 8.0 acres
- ▶ Ceiling Height: 22' clear
- ▶ Loading Docks: 6 docks
- ▶ Drive-In Door: 2 doors
- ▶ T-5 lighting
- ▶ Parking: +/- 60 car
- ▶ Heat: Gas
- ▶ Lease Rate: \$3.95/SF Gross
- ▶ Great location near O'Hare International Airport
- ▶ Offers Union Pacific Railroad service
- ▶ Terrific labor pool and strong community support
- ▶ Excellent proximity to highway system
- ▶ Institutionally owned and managed



**Colliers Bennett & Kahnweiler Inc.**  
6250 North River Road, Suite 11-100  
Rosemont, Illinois 60018

[www.colliersbk.com](http://www.colliersbk.com)

**FOR MORE INFORMATION**

**Matthew J. Stauber, SIOR**  
Principal  
847-698-8236  
mstauber@colliersbk.com

**Thomas C. Rodeno**  
Senior Vice President  
847-698-8231  
trodeno@colliersbk.com

**Joseph Reiff**  
Associate  
847-698-8225  
trodeno@colliersbk.com

**FOR LEASE: 80,661 SF**  
1010-1050 Sesame Street - Bensenville, Illinois



**Colliers Bennett & Kahnweiler Inc.**  
6250 North River Road, Suite 11-100  
Rosemont, Illinois 60018

[www.colliersbk.com](http://www.colliersbk.com)

**FOR MORE INFORMATION**

**Matthew J. Stauber, SIOR**  
Principal  
847-698-8236  
mstauber@colliersbk.com

**Thomas C. Rodeno**  
Senior Vice President  
847-698-8231  
trodeno@colliersbk.com

**Joseph Reiff**  
Associate  
847-698-8225  
trodeno@colliersbk.com