

10600 Seymour Ave. | Franklin Park, IL

- Located at the Southeast Corner of O'Hare Airport
- Easy Access to I-294

Building Size:	24,500 SF (Free Standing)
Office:	4,000 SF
Land Site:	44,820 SF
Year Built:	1967
Construction:	Face brick, brick knee wall and metal panel
Ceiling Height:	20'
Loading:	1 Drive-In Door 2 Interior Docks with 1 Leveler 2 Exterior Docks
Heat:	Gas Forced Air
Parking:	25+
Sprinklered:	Yes
Power:	200 amps / 3 Phase / 240 volt
Real Estate Taxes:	\$60,000 (\$2.58 PSF)
Lease Price:	\$6.25 PSF Gross
Sale Price:	\$1,200,000
Remarks:	<ul style="list-style-type: none"> ■ Located at Irving Park & Seymour Ave. intersection ■ New roof on office/metal roof on warehouse ■ Fenced outside storage

For more information,
please contact:

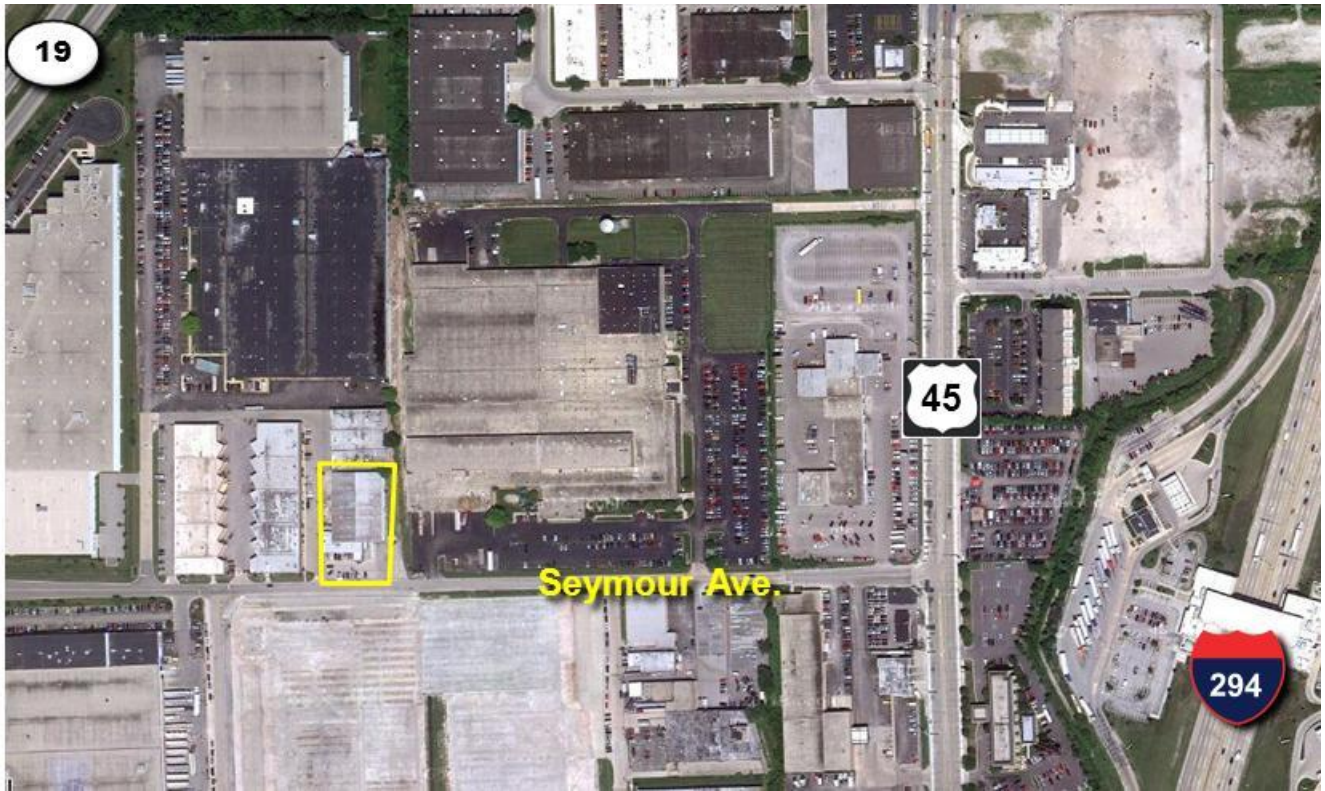
THOMAS M. CONDON, SIOR
847 698 8212
tom.condon@colliers.com

JOHN M. HAMILTON
847 698 8247
john.hamilton@colliers.com

COLLIERS INTERNATIONAL
6250 N. River Road
Suite 11-100
Rosemont, IL 60018

No warranty or representation is made to the
accuracy of the foregoing information.





10600 Seymour Ave. | Franklin Park, IL

For more information,
please contact:

THOMAS M. CONDON, SIOR
847 698 8212
tom.condon@colliers.com

JOHN M. HAMILTON
847 698 8247
john.hamilton@colliers.com

COLLIERS INTERNATIONAL
6250 N. River Road
Suite 11-100
Rosemont, IL 60018

No warranty or representation is made to the
accuracy of the foregoing information.

