



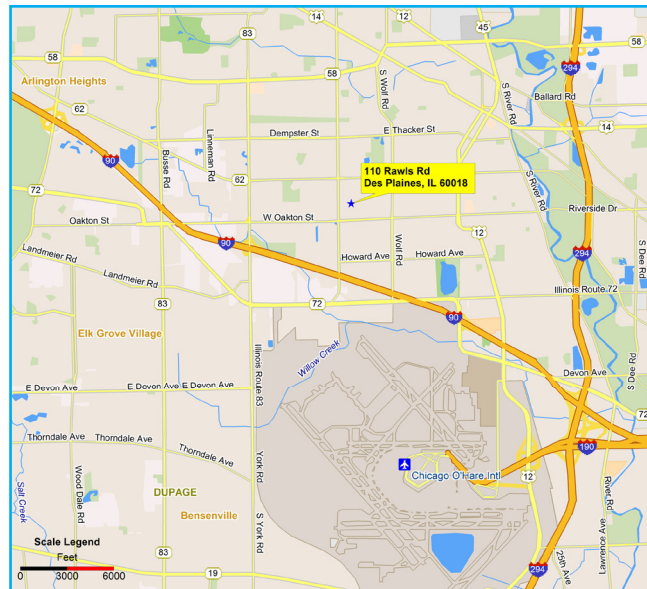
# FOR LEASE

## 110-120 RAWLS ROAD - DES PLAINES, IL



### PROPERTY HIGHLIGHTS

- ▶ AVAILABLE: 12,000 square feet
- ▶ OFFICE AREA: 1,200 square feet
- ▶ CEILING HEIGHT: 18' clear
- ▶ LOADING: One (1) interior dock, One (1) drive-in door
- ▶ BAY SIZES: 39' 8" x 32' 8"
- ▶ HEATING: Individual gas fired units
- ▶ POWER: 400 amps, 480/277 volt, 3-phase
- ▶ SPRINKLERS: Wet
- ▶ PARKING: 42 cars
- ▶ POSSESSION: January 1, 2010
- ▶ LEASE RATE: \$6.00 per square foot gross
- ▶ On-site exterior storage available
- ▶ Newly Refurbished
- ▶ Minutes from I-90 and O'Hare Airport



**Colliers Bennett & Kahnweiler Inc.**  
 6250 North River Road, Suite 11-100  
 Rosemont, Illinois 60018

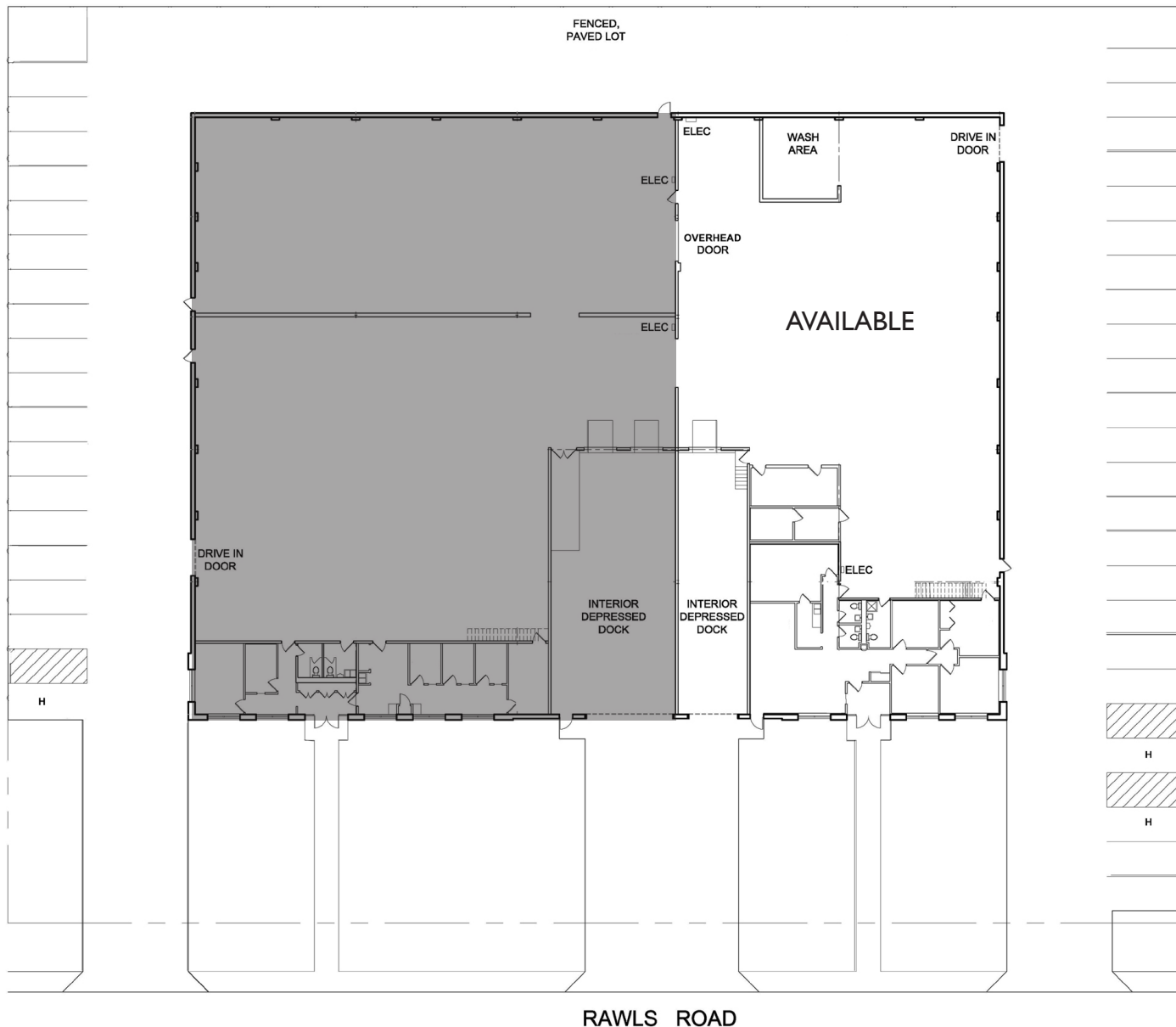
[www.colliersbk.com](http://www.colliersbk.com)

### FOR MORE INFORMATION

**Jonathan D. Kohn**  
 Associate  
 847-698-8279  
[jkohn@colliersbk.com](mailto:jkohn@colliersbk.com)

# FOR LEASE

## 110-120 RAWLS ROAD - DES PLAINES, IL



**Colliers Bennett & Kahnweiler Inc.**  
6250 North River Road, Suite 11-100  
Rosemont, Illinois 60018

[www.colliersbk.com](http://www.colliersbk.com)

### FOR MORE INFORMATION

**Jonathan D. Kohn**  
Associate  
847-698-8279  
[jkohn@colliersbk.com](mailto:jkohn@colliersbk.com)