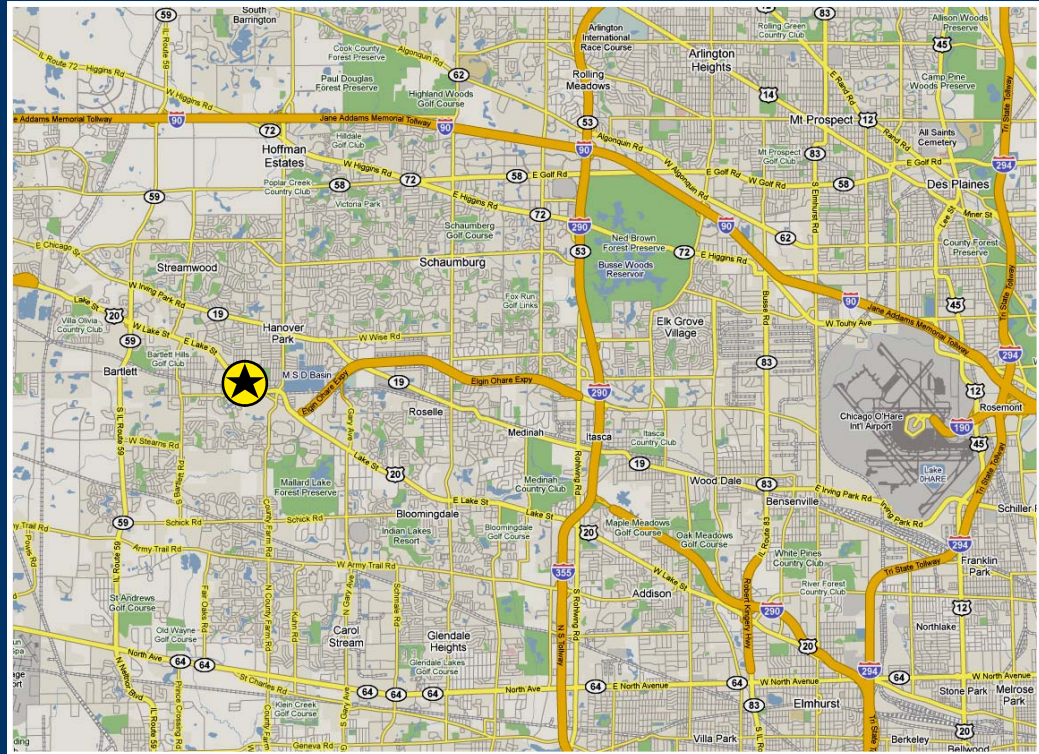




PROPERTY HIGHLIGHTS

- Available: 443,493 SF
- Land Site: 32.91 Acres
- Ceiling: 20', 24' and 34'
- Loading: 29 exterior docks
- Drive-in Doors: 5
- Sprinklers: Wet
- Heat: Gas
- Power: Four at 1,600 amps + one at 1,200 amps
- Car Parking: 215 spaces
- Trailer Parking: 54 spaces
- Rail: Canadian Pacific
- Sale Price: STO
- Lease Rate: STO
- R.E. Taxes: \$1.04/SF (2008)



David Bercu, SIOR
(847) 698-8207
dbercu@colliersbk.com

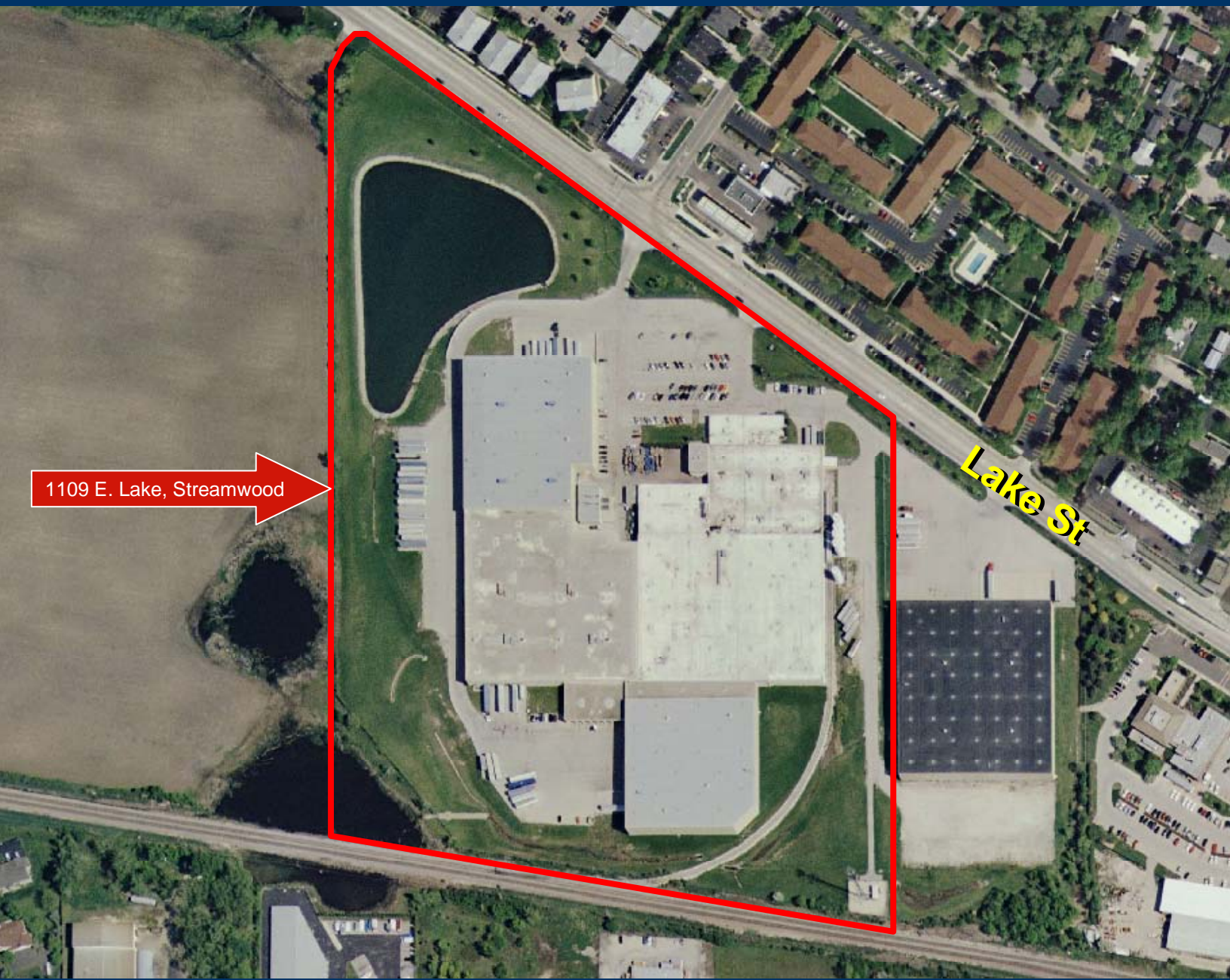
For More Information Contact:
James R. Estus, SIOR
(847) 698-8235
jestus@colliersbk.com



AVAILABLE

RAIL SERVED

1109 E. Lake Street, Streamwood, Illinois



1109 E. Lake, Streamwood

Lake St

For More Information Contact:

David Bercu, SIOR
(847) 698-8207
dbercu@colliersbk.com

James R. Estus, SIOR
(847) 698-8235
jestus@colliersbk.com

