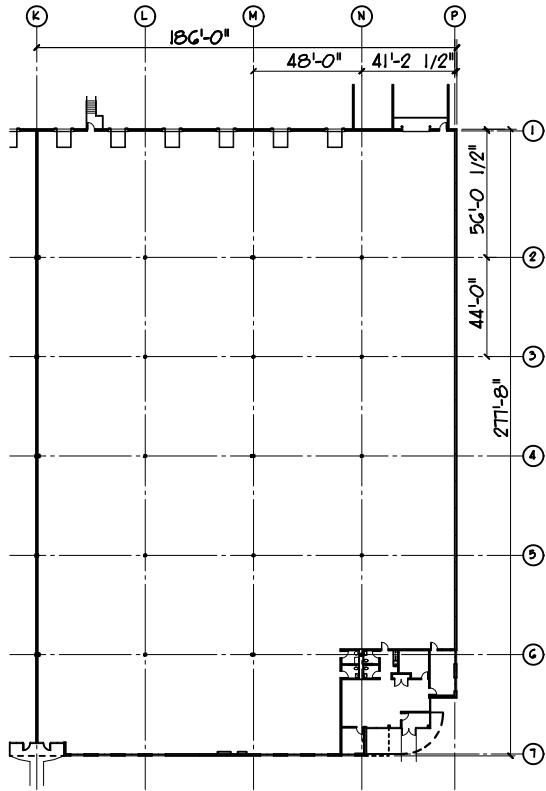
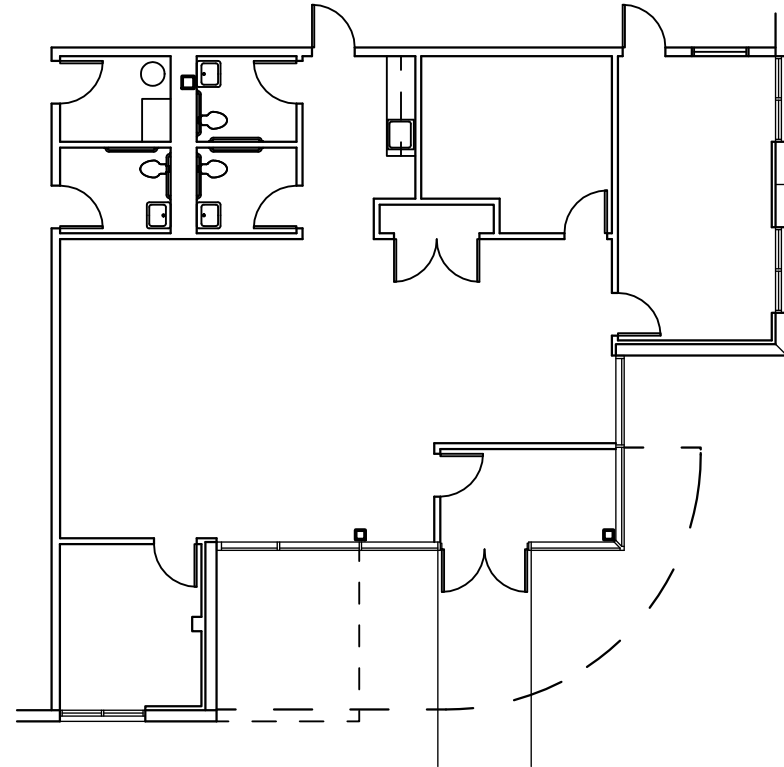


WINDHAM INDUSTRIAL CENTER IV

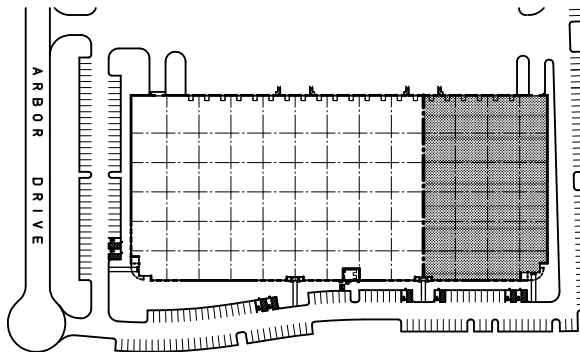
ROMEVILLE, IL



VACANT SPACE : 51,076 RSF



OFFICE PLAN



KEY PLAN



NOT TO SCALE

SPACE INFO:

| | |
|-------------------|---------------|
| AREA: | 51,076 S.F. |
| NO. OF DOCKS: | 6 |
| NO. OF DRIVE UPS: | 1 |
| TYPICAL BAY: | 48'-0"x44'-0" |

ADDRESS: 1152 ARBOR DRIVE

MANAGED BY: COLLIERS B&K REMS