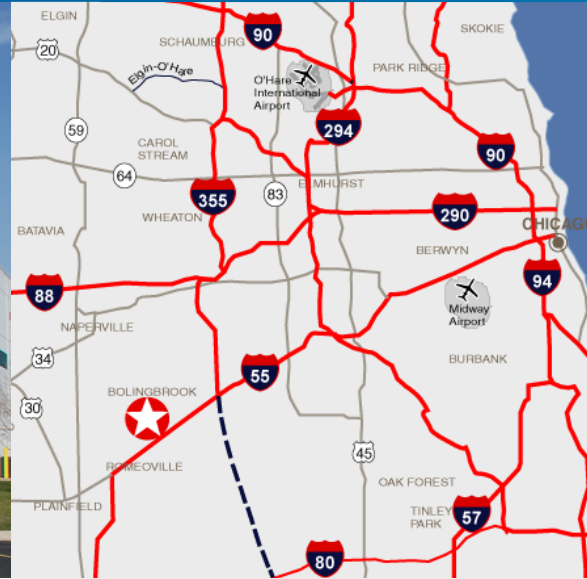


FOR LEASE > 255,561 SQUARE FEET

Windham Lakes Business Park



1160-1180 REMINGTON BLVD., ROMEOVILLE, IL



About This Property

- > Available Space: 255,561 SF
- > Divisible To: 118,768 SF
- > Office: 3,000 SF
- > Total Building Size: 450,900 SF
- > Loading Docks: 41 ext. / 2 DIDs
- > Parking: 58 trailers / 114 cars
- > Ceiling Height: 30' clear
- > Heat: Gas unit heaters
- > Lighting: Metal halide
- > Configuration: Crossload, 450' deep
- > Sprinklers: ESFR system
- > Bay Size: 48' x 42'
- > Year Built: 2000
- > Lease Rate: \$2.75/SF Net
- > Real Estate Taxes: \$0.93/SF (est.)
- > CAM: \$0.30/SF (est.)
- > Located in the prestigious Windham Lakes Business Park
- > Easy access to I-55 via a 4-way interchange at Weber Road

Contact Us

JAMES R. ESTUS, SIOR

847 698 8235

jim.estus@colliers.com

CHARLES V. CANALE

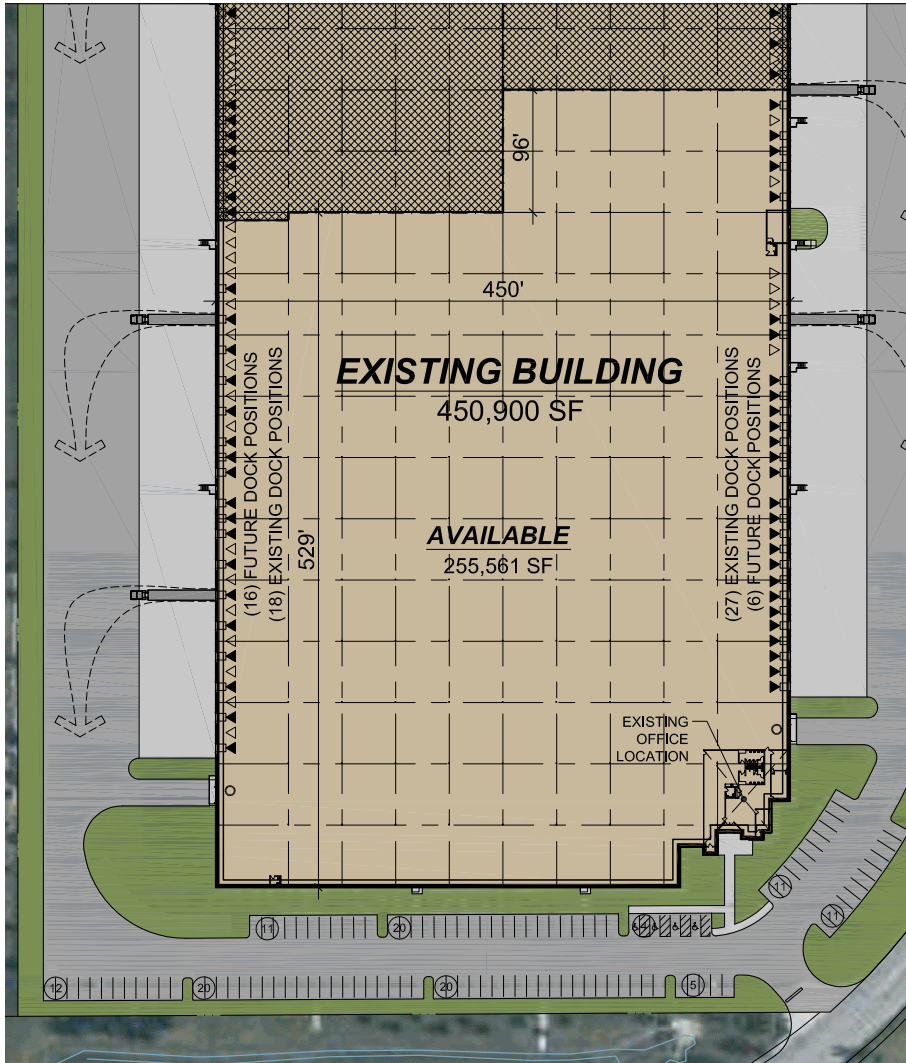
847 698 8211

charles.canale@colliers.com

No warranty or representation is made to the accuracy of the foregoing information. Terms of sale or lease and availability are subject to change or withdrawal without notice.

COLLIERS INTERNATIONAL
6250 N. River Road, Suite 11-100
Rosemont, IL 60018
www.colliers.com

1160-1180 Remington Blvd. > Site Plan



PROJECT DATA:

BUILDING AREA:	450,900 SF
OCCUPIED:	195,339 SF
AVAILABLE:	255,561 SF
EXISTING PARKING:	217 STALLS
TRAILERS:	27 FUTURE STALLS

AVAILABLE TRUCK DOCKS:

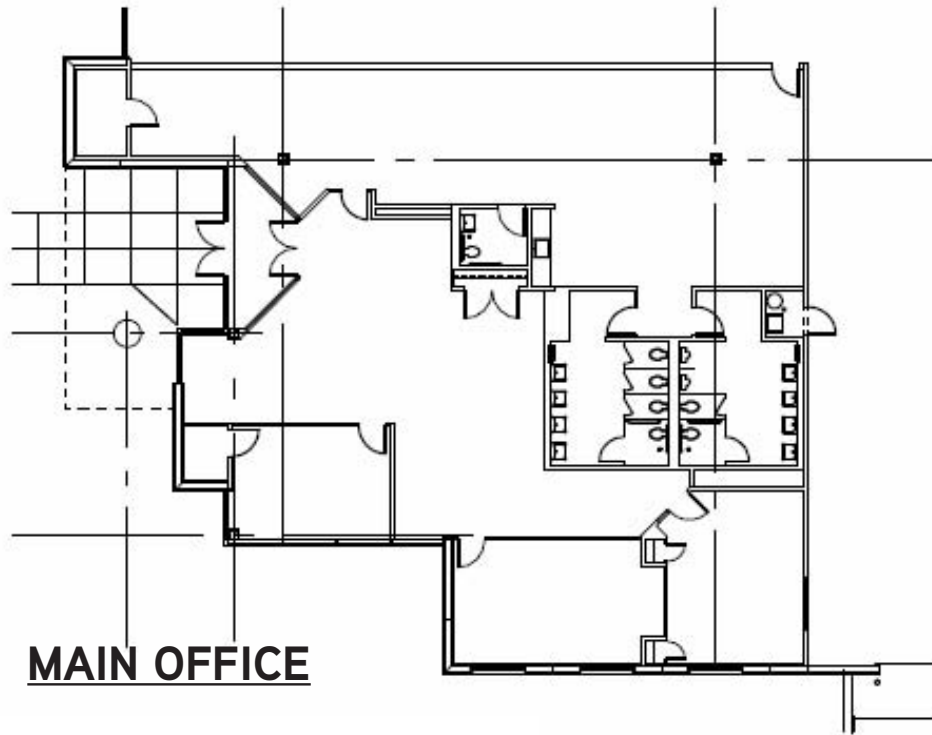
EXISTING:	45 POSITIONS
FUTURE:	22 POSITIONS

TENANT PARKING BREAKDOWN:

TENANT "A":	58 STALLS
TENANT "B":	45 STALLS
AVAILABLE:	114 STALLS

SITE LEGEND:

- ◄ DOCK HIGH TRUCK DOOR
- ◁ FUTURE DOCK HIGH TRUCK DOOR
- GRADE LEVEL TRUCK DOOR



WAREHOUSE OFFICE

