

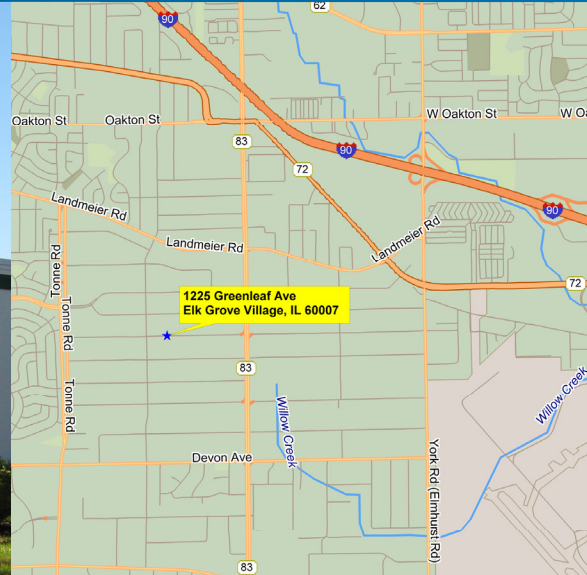
FOR SALE OR LEASE > 15,682 - 34,856 SF

1331 Greenleaf Ave.

ELK GROVE VILLAGE, IL



With Cook County "6B" tax resolution in place and 10% down you can own for less than \$6.00 PSF Gross!



About This Property

- > 34,856 SF (divisible to 15,682)
- > Office: 5,708 - 14,383 SF
- > 1 exterior dock (expandable to two), 2 drive-in doors
- > 14' clear
- > 1,200 amps @ 120/240 volt
- > 400 amps @ 270/480 volt
- > 48 parking spaces (expandable)
- > 100% air-conditioned
- > Taxes: \$0.70/SF

Contact Us

MATTHEW J. STAUBER, SIOR
Principal
847 698 8236
matthew.stauber@colliers.com

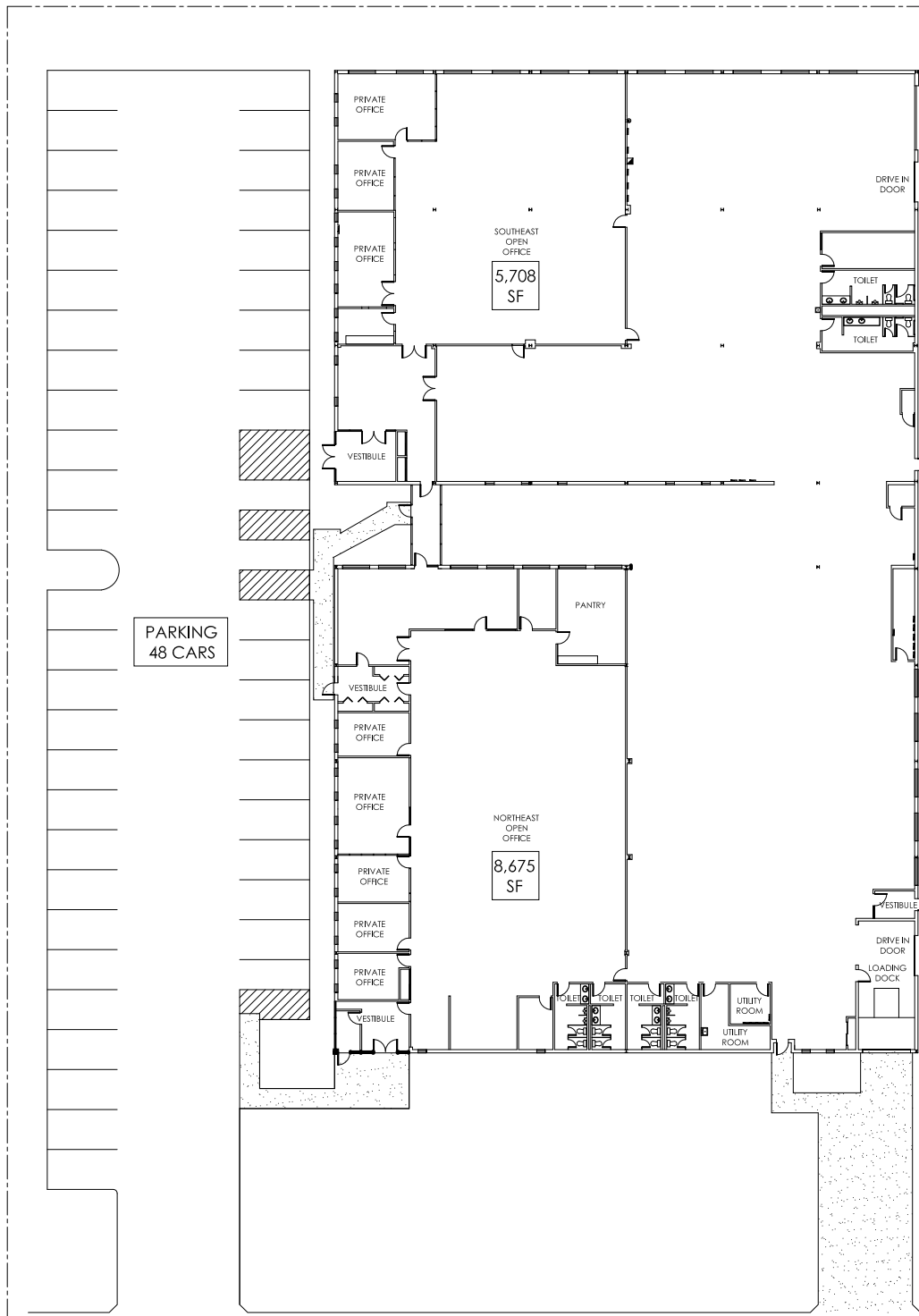
THOMAS C. RODENO
Senior Vice President
847 698 8231
tom.rodено@colliers.com

JONATHAN D. KOHN
Senior Associate
847 698 8279
jonathan.kohn@colliers.com

No warranty or representation is made to the accuracy of the foregoing information.
Terms of sale or lease and availability are subject to change or withdrawal without notice.

COLLIERS INTERNATIONAL
6250 N. River Road, Suite 11-100
Rosemont, IL 60018
www.colliers.com

1331 Greenleaf Ave. > Floor Plan (Two Tenant Scenario)



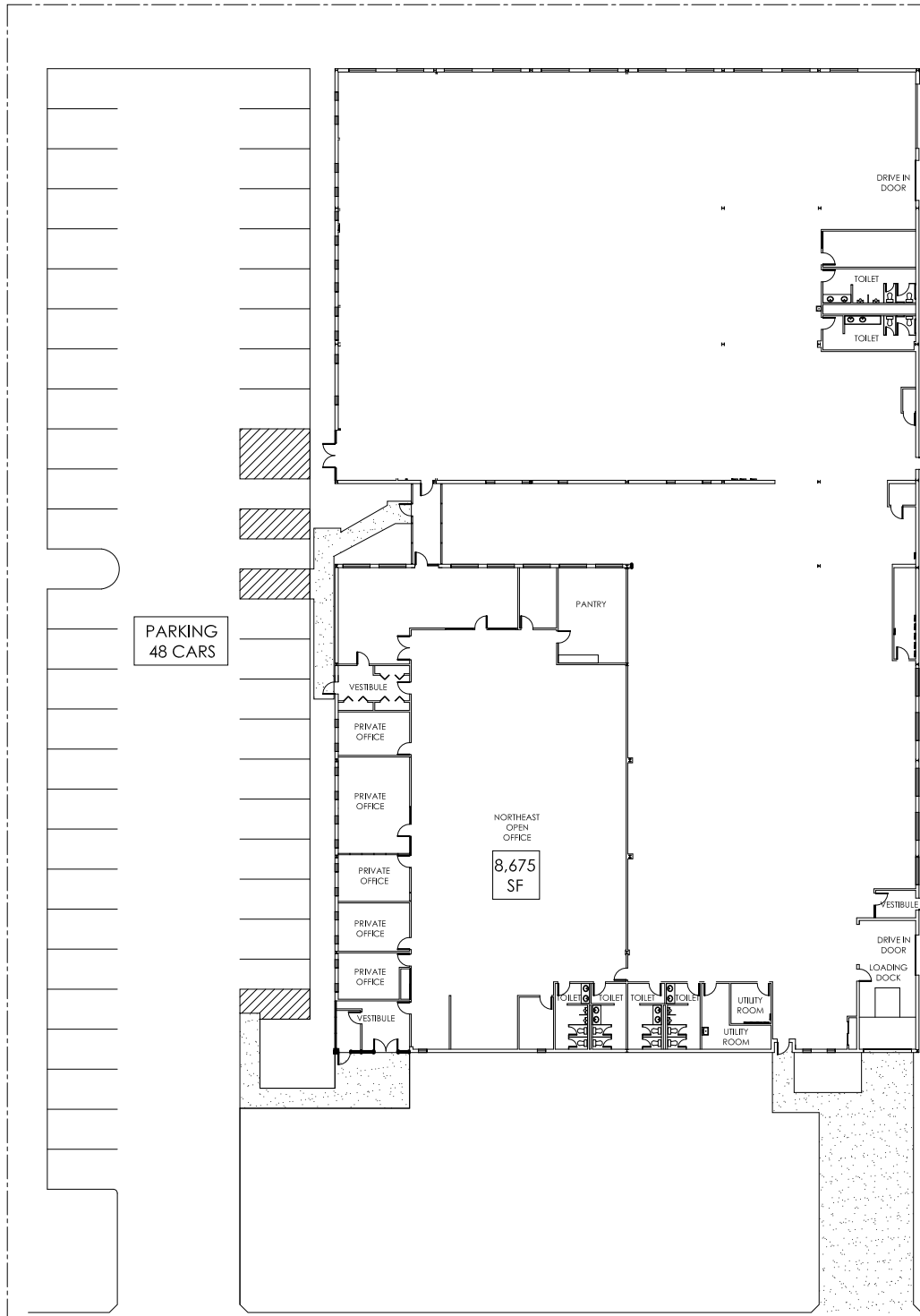
MATTHEW J. STAUBER, SIOR
Principal
847 698 8236
matthew.stauber@colliers.com

THOMAS C. RODENO
Senior Vice President
847 698 8231
tom.rodeno@colliers.com

JONATHAN D. KOHN
Senior Associate
847 698 8279
jonathan.kohn@colliers.com



1331 Greenleaf Ave. > Floor Plan (Single Tenant Scenario)



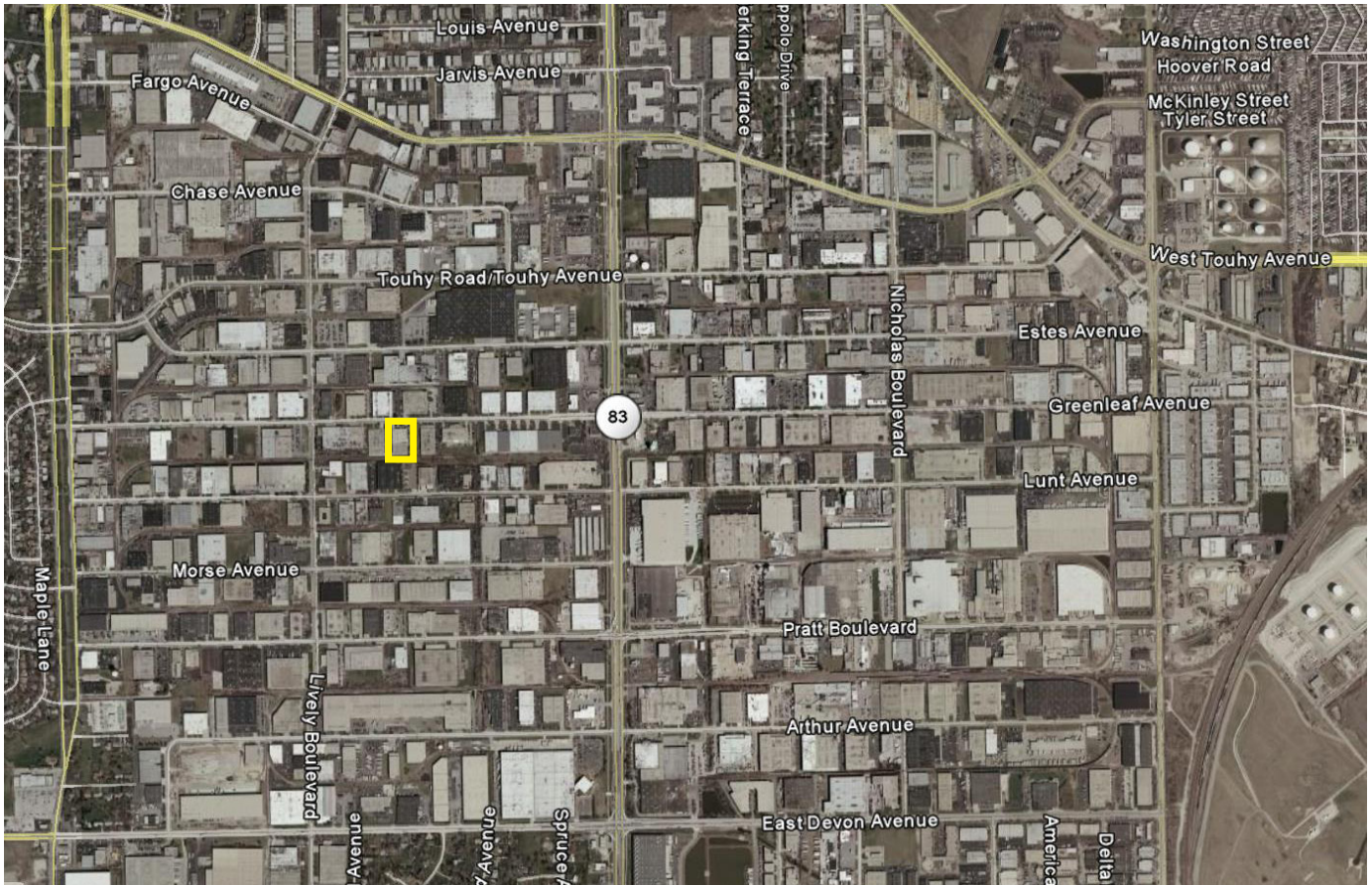
MATTHEW J. STAUBER, SIOR
Principal
847 698 8236
matthew.stauber@colliers.com

THOMAS C. RODENO
Senior Vice President
847 698 8231
tom.rodeno@colliers.com

JONATHAN D. KOHN
Senior Associate
847 698 8279
jonathan.kohn@colliers.com



1331 Greenleaf Ave. > Aerial



MATTHEW J. STAUBER, SIOR
Principal
847 698 8236
matthew.stauber@colliers.com

THOMAS C. RODENO
Senior Vice President
847 698 8231
tom.rodeno@colliers.com

JONATHAN D. KOHN
Senior Associate
847 698 8279
jonathan.kohn@colliers.com

