

Board
 Inside of Stair.
 Dimension of Two
 Risers.

Provide 1 1/2" Clearance B/W
 Gyp. Bd. Partition and Handrail.

Remove Existing Door
 and Frame. Install New
 Hollow Metal Door and Frame.

Board
 Underside of Stairs
 Office.

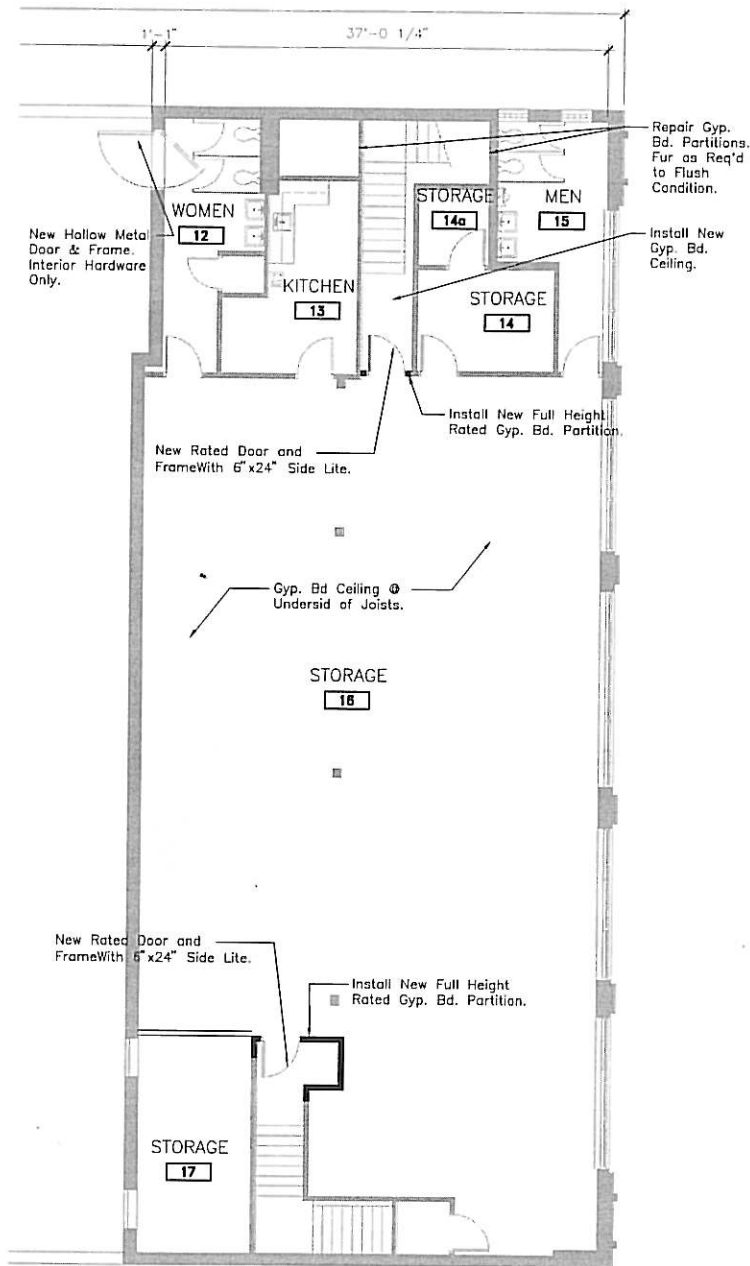
Enlarge Opening to be
 4'-6" Wide by 9'-0"
 High. Align Openings.
 Lintel: 2-5" x 5" x 3/8" Angles
 12" Bearing Min. On Both Sides.

Remove Existing
 O.H. Door & Track

Remove Existing Door and
 Frame.

Fill Door Opening W/ New
 Gyp. Bd. Partition to Match
 Existing.

Remove Existing Door
 and Frame. Install New
 Hollow Metal Door and Frame.



2 SECOND FLOOR PLAN
 SCALE: 1/8" = 1'

1233 W. MONROE
 CHICAGO, ILLINOIS

600 W FULTON ST
 CHICAGO
 ILLINOIS
 60661 1199
 A. EPSTEIN AND SONS INTERNATIONAL

EPSTEIN
 CHICAGO
 NEW YORK
 LOS ANGELES
 WARSAW
 TEL AVIV
 TOKYO
 TEL 312 454 9100
 FAX 312 559 1217

GENERAL NOTES

 NEW CONCRETE SLAB

ight
 e,
 c
 .F.