

AVAILABLE FOR LEASE

# 224,831 SF Cross-Dock Facility

135-195 E. Elk Trail, Carol Stream, Illinois



For more information, please contact:

## Ron Behm, SIOR

Principal  
847-698-8210  
rbehm@colliersbk.com

## Brian W. Kling

Vice President  
847-698-8223  
bkling@colliersbk.com

COLLIERS  
B&K

[www.colliersbk.com](http://www.colliersbk.com)

Colliers Bennett & Kahnweiler Inc.  
6250 N. River Road, Suite 11-100,  
Rosemont, Illinois 60018  
tel 847-698-8444 fax 847-698-8445

## 224,831 SF Available (Divisible)

- ▶ Total Bldg Size: 334,718 SF
- ▶ Office size: To suit
- ▶ Construction: Pre-cast panel
- ▶ Truck docks: 48 total  
East elevation: 30 ext  
West elevation: 18 ext.
- ▶ Drive-in doors: Four (4)
- ▶ Bay Sizes: 40' x 48'
- ▶ Sprinklers: ESFR
- ▶ Clear Height: 30' clear
- ▶ Parking: 200 cars approx.
- ▶ Trailer Parking: Available to suit
- ▶ Electrical: 2400 amps / 480 volt
- ▶ Zoning: I - industrial
- ▶ Built: 1997



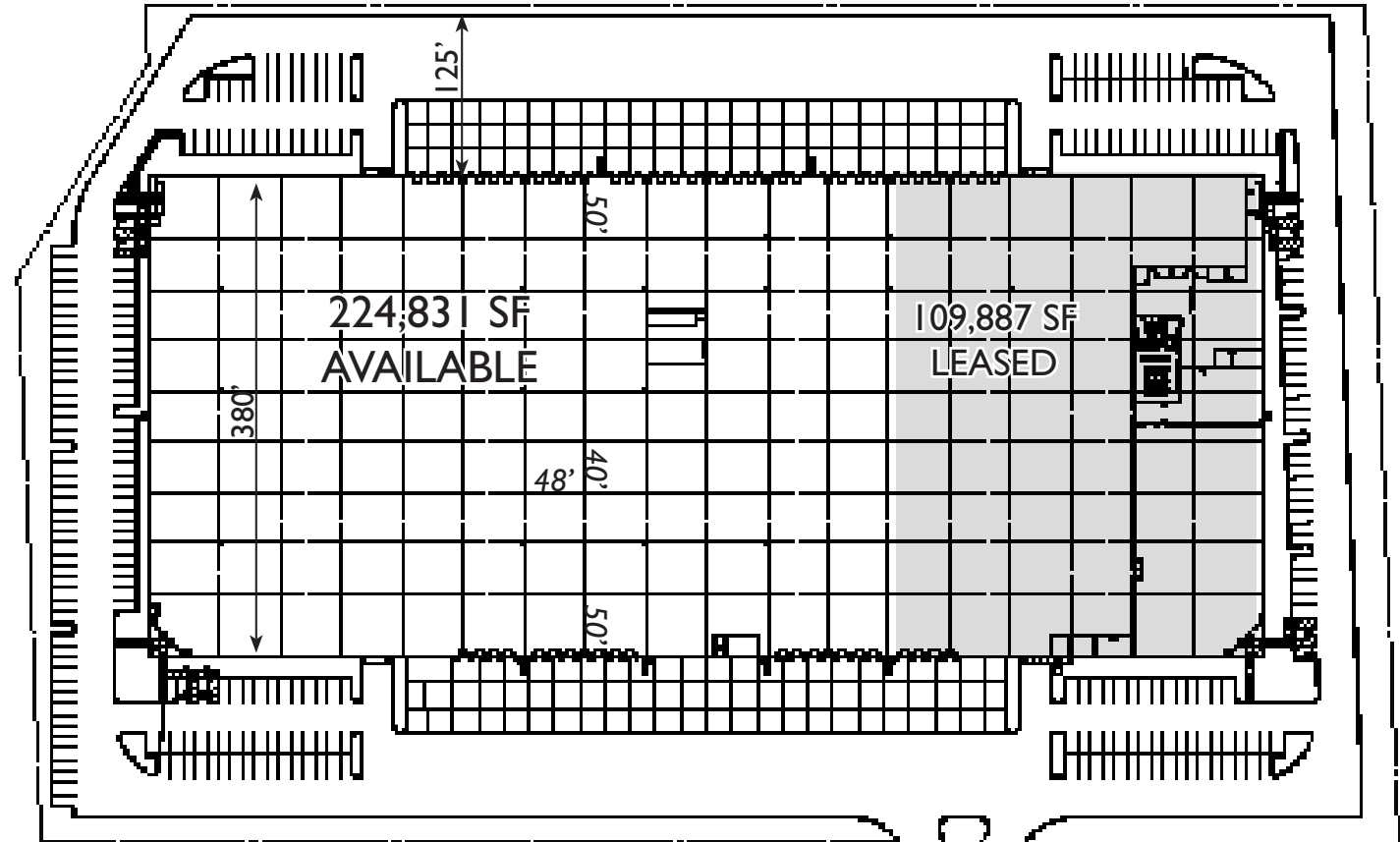
AVAILABLE FOR LEASE

# 224,831 SF Cross-Dock Facility

135-195 E. Elk Trail, Carol Stream, Illinois



**James Campbell**  
COMPANY LLC  
A JAMES CAMPBELL COMPANY PROPERTY



For more information, please contact:

**Ron Behm, SIOR**

Principal

847-698-8210

rbehm@colliersbk.com

**Brian W. Kling**

Vice President

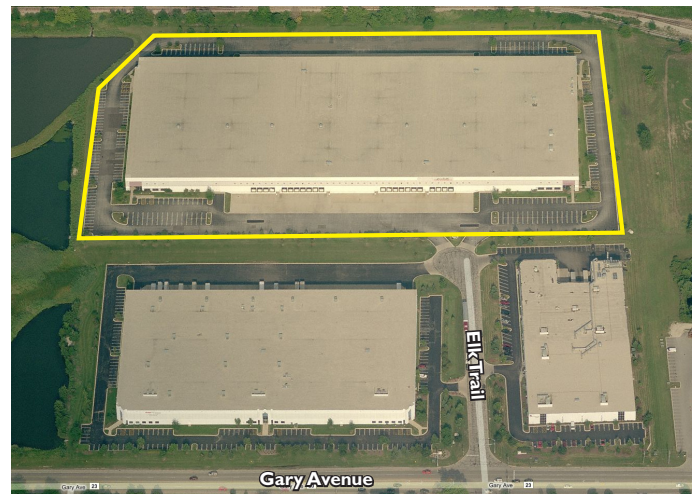
847-698-8223

bkling@colliersbk.com

**COLLIERS**  
B&K

[www.colliersbk.com](http://www.colliersbk.com)

Colliers Bennett & Kahnweiler Inc.  
6250 N. River Road, Suite 11-100,  
Rosemont, Illinois 60018  
tel 847-698-8444 fax 847-698-8445



No warranty or representation is made to the accuracy of the foregoing information. Terms of sale or lease and availability are subject to change or withdrawal without notice.